

AQUARIUS

A. ONGARELLO

♩ = 140

(A)

T
A
B

VIII C Δ

VII B7

v B \flat 6

v A7

T
A
B

III A \flat 6

III G7

C Δ

III Dm7

III G7

CAPRICORNUS

A. ONGARELLO

♩ = 130

A

II **G6** VII **B7** v **Em7** VI **E7** v **Am7** IV **A \flat 7** II **G6** III **G7**

VIII **Cm7** VII **B7** v **B \flat 6** III **Gm7** v **A7** v **Am7** IV **D9-**

CYGNUS

A. ONGARELLO

♩ = 135

A

5 5 5 6 8 5 | 5 | 3 3 3 5 3 3 5

v F Δ

IV D7

III Gm7

II C7

2 2 2 3 5 2 | 3 | 5 4 5 2 3 5 | 3 5 6 3 4

v Am7

III Dm7

III Dm6

III Gm7

VI C11

VI C9-

PISCES

A. ONGARELLO

♩ = 130

(A)

VIII Cm7 IV D9- III Gm7 VI B°

VIII Cm7 VII F7 V D° III G7

LUPUS

A. ONGARELLO

♩ = 145

A

VIII Cm7 IX G7 VIII Cm7 VII F9 VII B7

VI Bbm7 v Eb9 III Ab6 III Db9

LYRA

A. ONGARELLO

♩ = 140

A

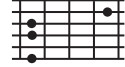
IV $A\flat 13$



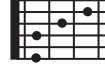
III $G 13$



II $G\flat m7$



F13



$B\flat \Delta$



v $E\flat 9$



VII $E \emptyset$



v $A 7/5+$



PEGASUS

A. ONGARELLO

♩ = 130

A

VII F Δ

v Em7

III Dm7

II C6

III Gm7

IV A $^{\circ}$

VI B \emptyset

VI B \flat 7

CASSIOPEA

A. ONGARELLO

$\text{♩} = 140$

A

TAB

III C#[∅]

II F#7

III Am11

III D7

II G6

TAB

v A7

v Am7

IV D9

GEMINI

A. ONGARELLO

♩ = 130

A

Musical notation for the first system. The treble clef staff shows a melodic line starting with a whole note chord, followed by quarter notes, and ending with a half note. The guitar TAB staff shows fret numbers: 7, 5-7, 5-7-7, and 5.

F Δ

F6

F Δ

F6

Musical notation for the second system. The treble clef staff shows a melodic line with a long note, a whole note, a quarter note, and a half note. The guitar TAB staff shows fret numbers: 7, 5, 6-8-7.

v Em7

v Em9

v A7

v E \flat 9

VIRGO

A. ONGARELLO

♩ = 135

A

v F Δ

v Em7

viii Cm7

vii F7

vi B \flat Δ

ii G \flat 13

CANCER

A. ONGARELLO

♩ = 130

(A)

v B \flat 69

IV A $^{\circ}$

III A \flat m6

III D \flat 9

III D \flat 9-

III Gm7

F13/9-/G \flat

F \sharp $^{\circ}$

IV A $^{\circ}$

IV E Δ

SCORPIUS

A. ONGARELLO

♩ = 145

A

T
A
B

v F Δ v Em9 v A7/5+ III Dm7 III G7 Cm9 F7/5+

T
A
B

B \flat Δ VI B \flat m7 v Eb9 v Am7 IV D9-